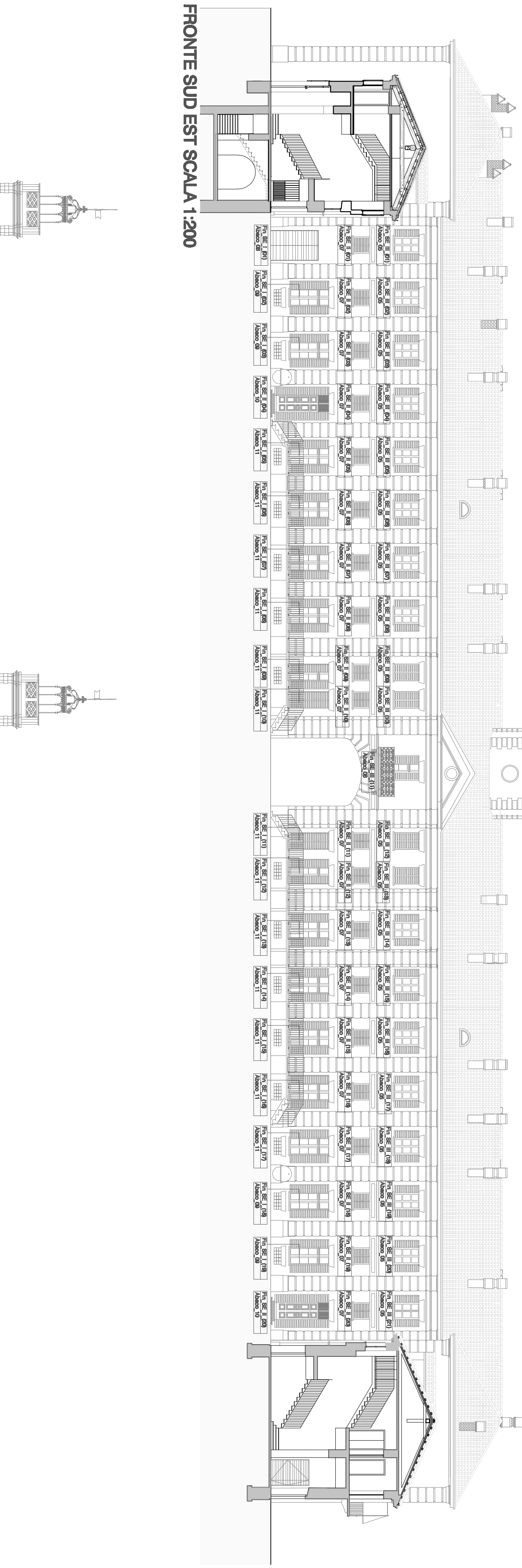
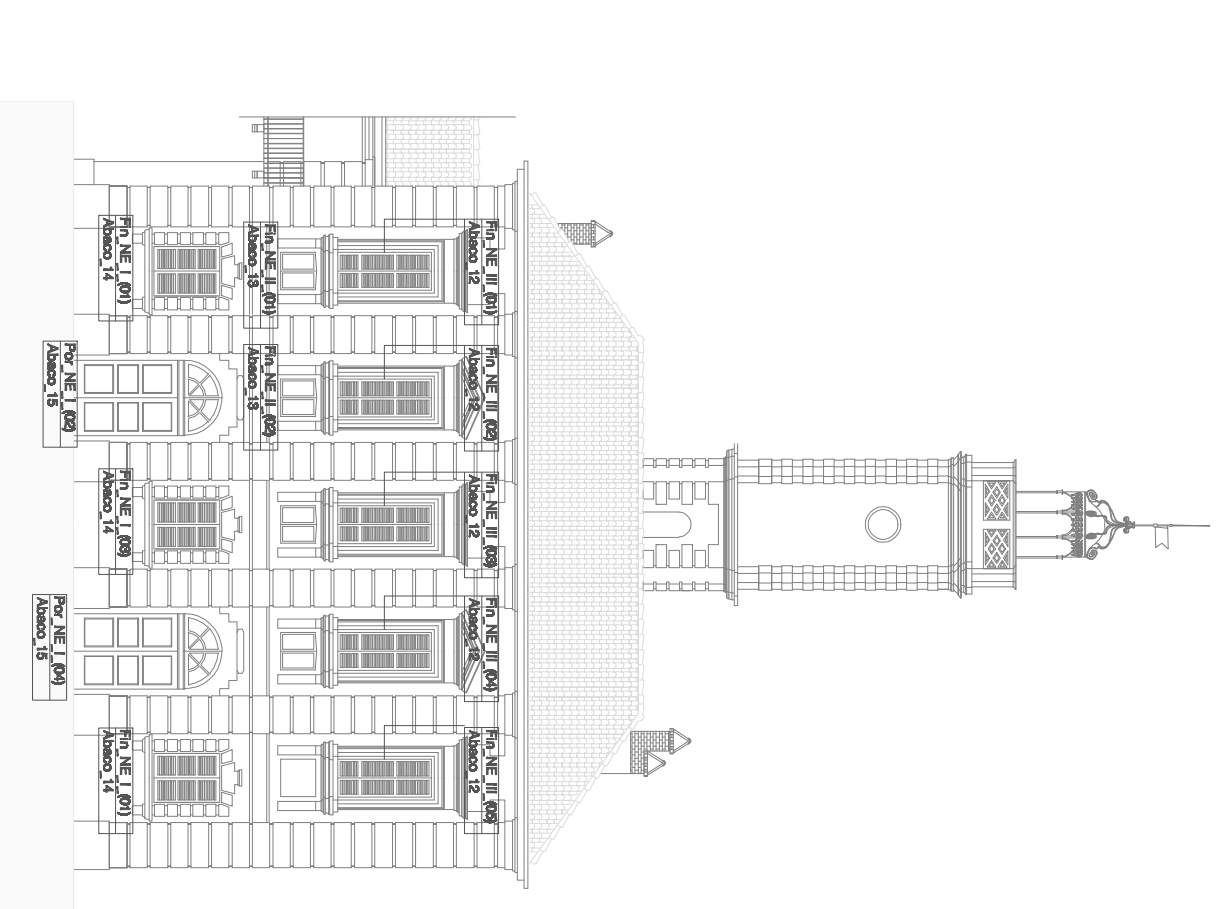


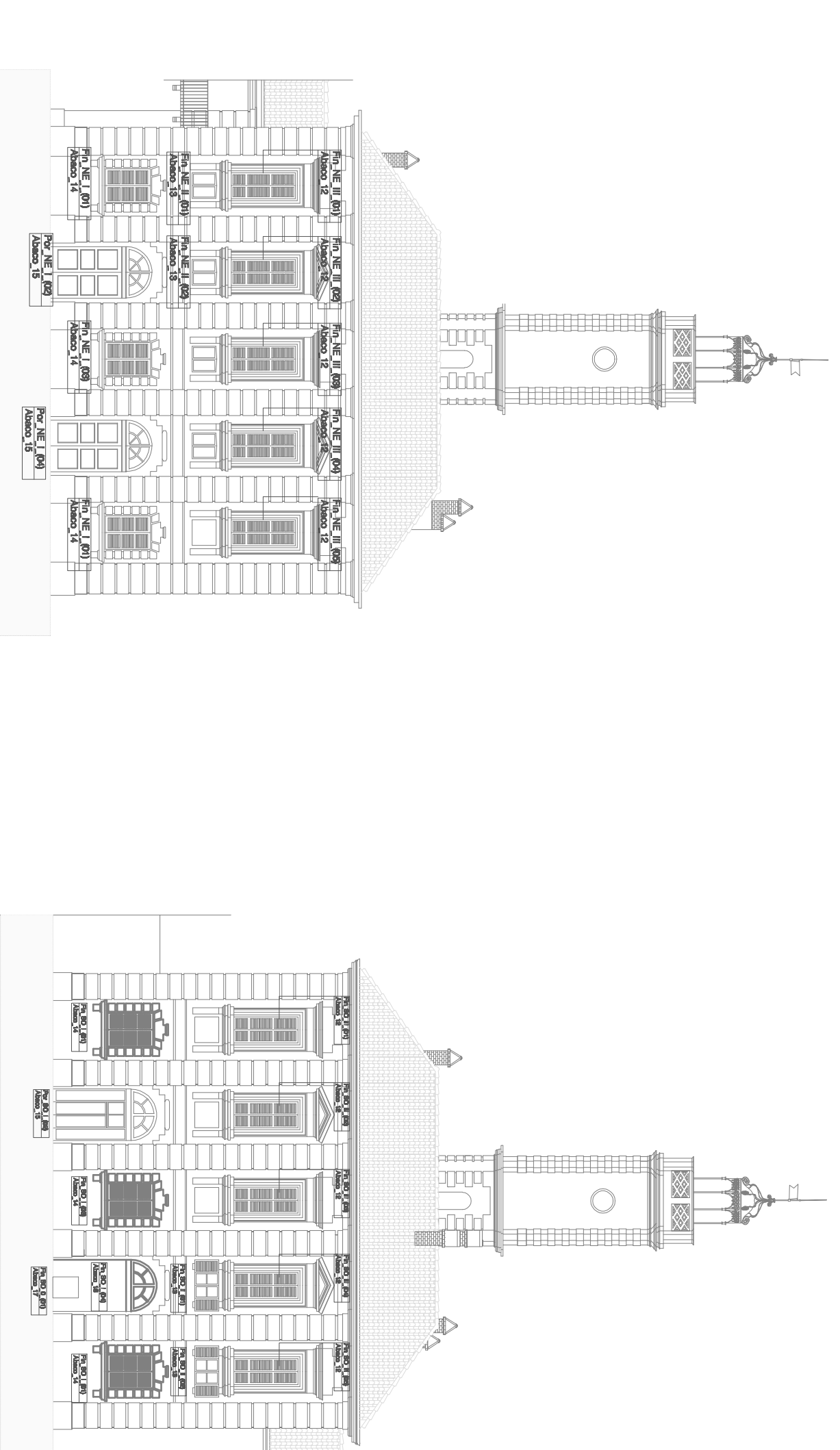
FRONTE NORD OVEST SCALA 1:200



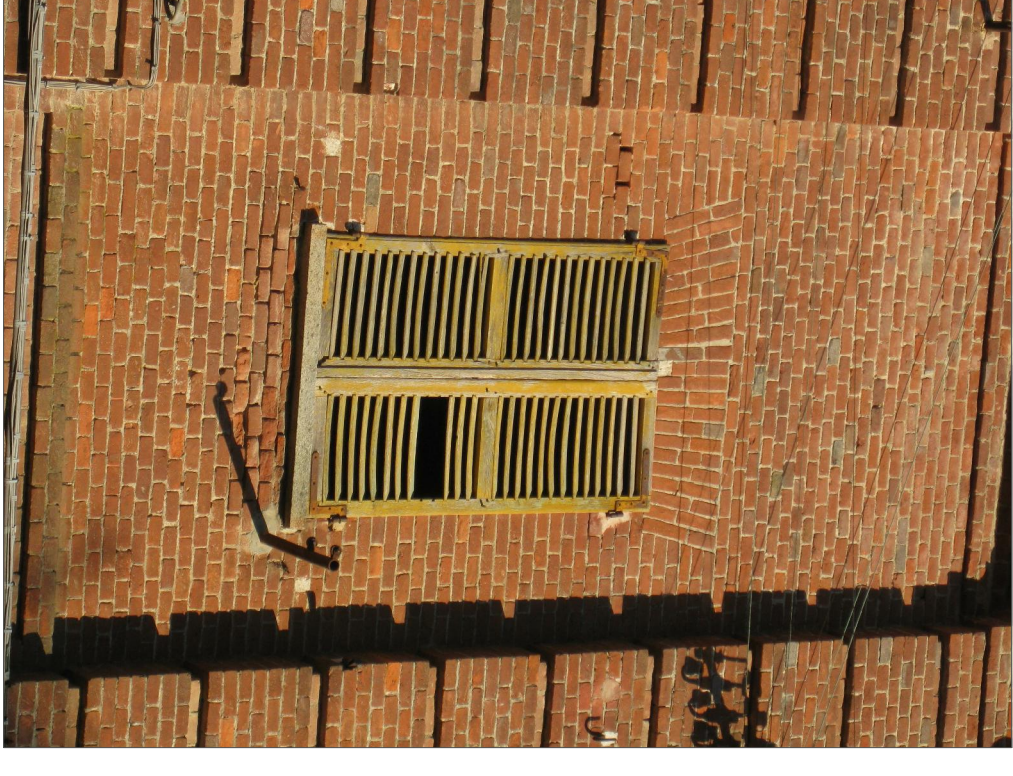
FRONTE SUD EST SCALA 1:200



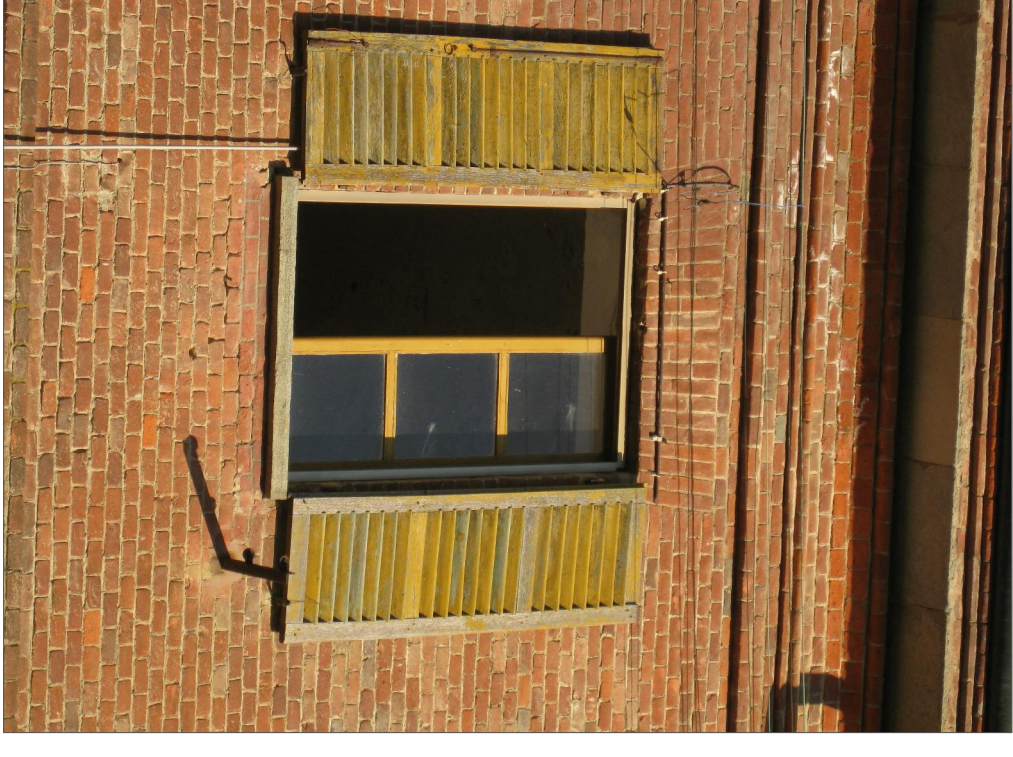
FRONTE NORD EST SCALA 1:200



FRONTE SUD OVEST SCALA 1:200



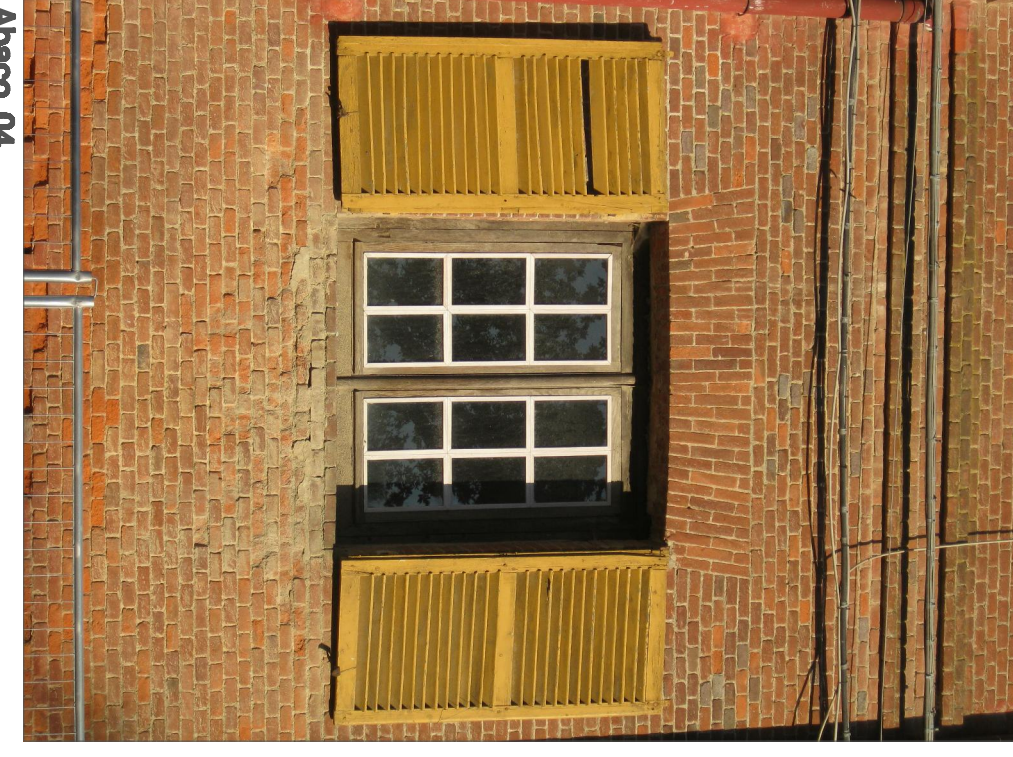
Abaco_01



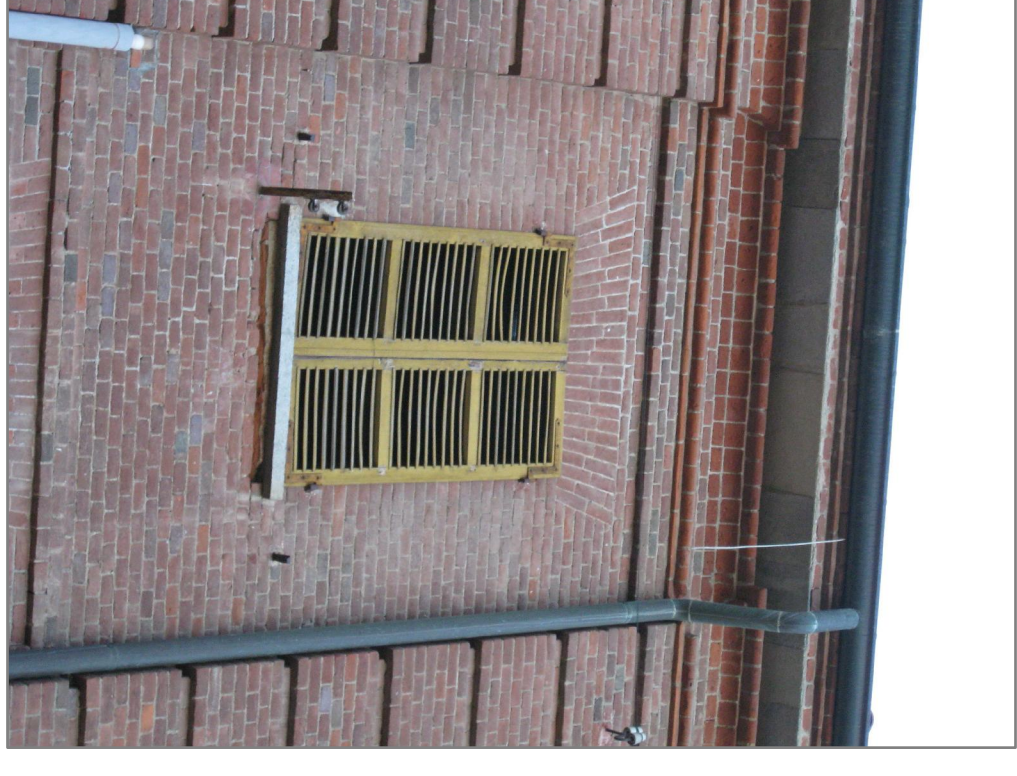
Abaco_02



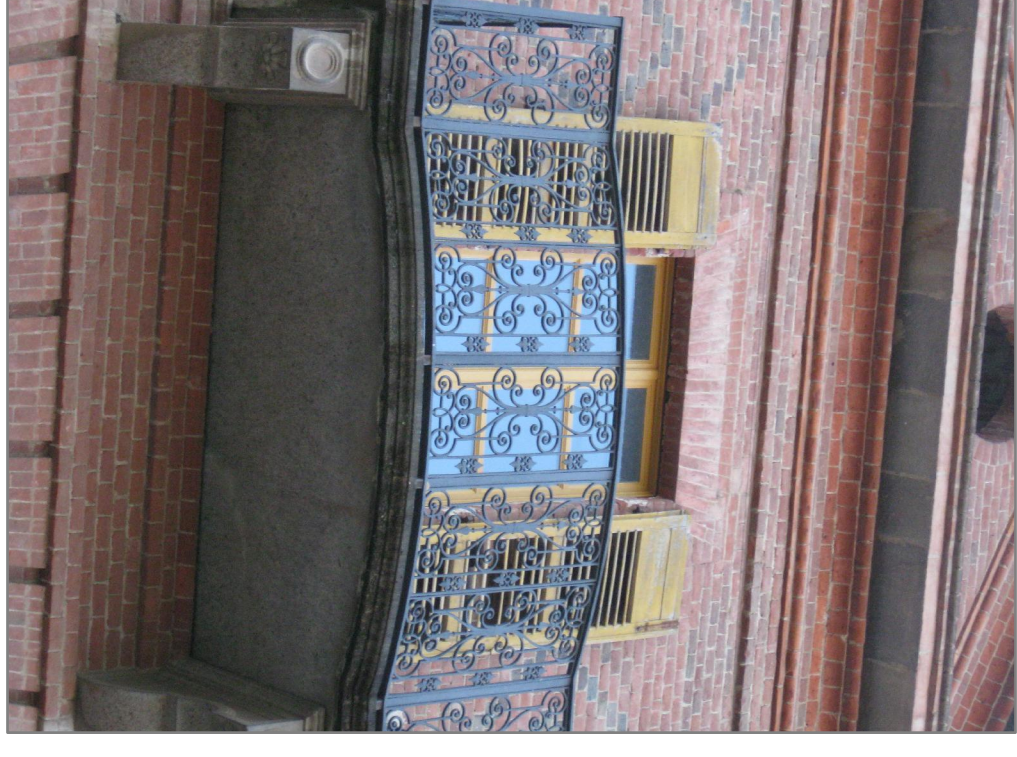
Abaco_03



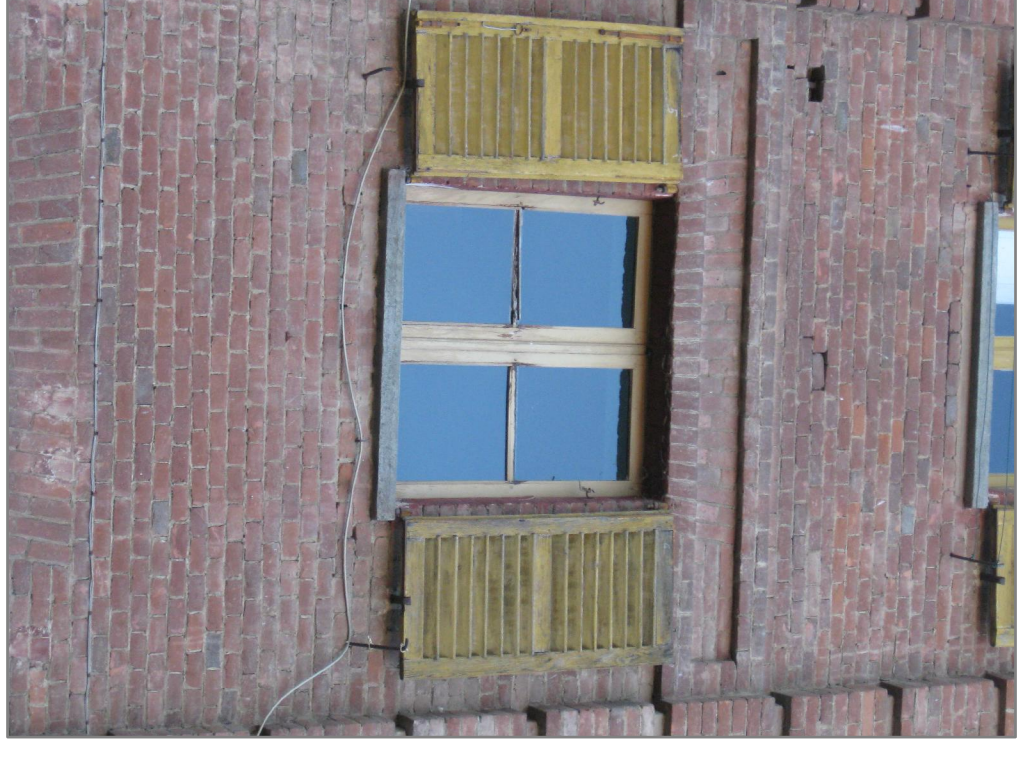
Abaco_04



Abaco_05



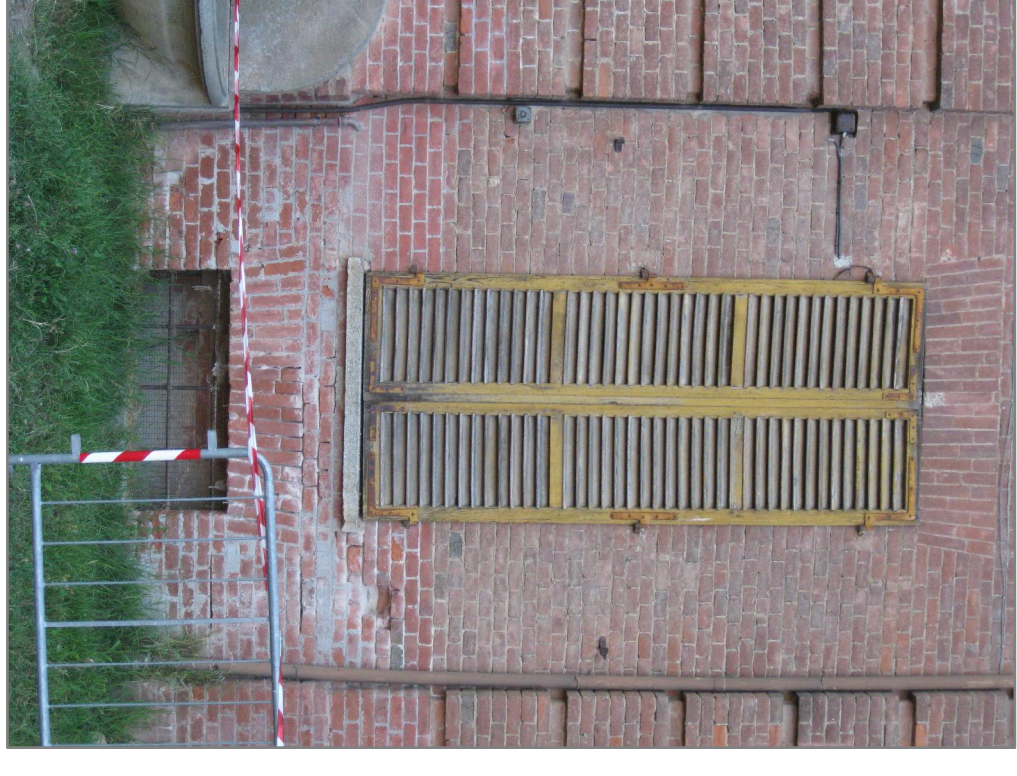
Abaco_06



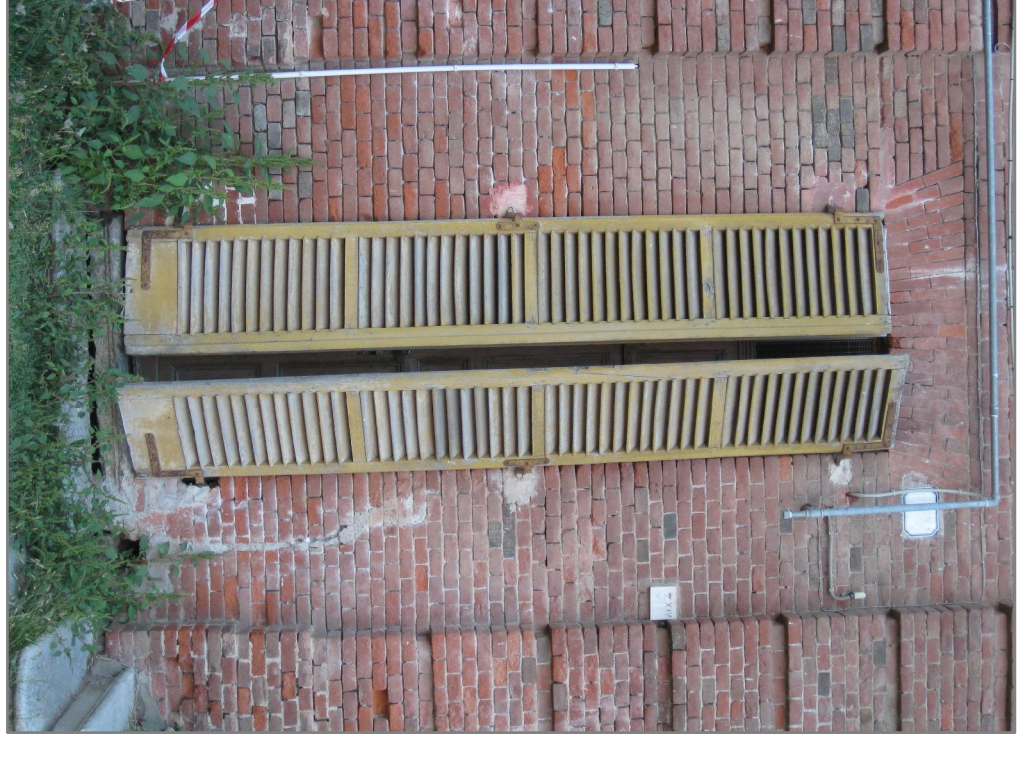
Abaco_07



Abaco_08



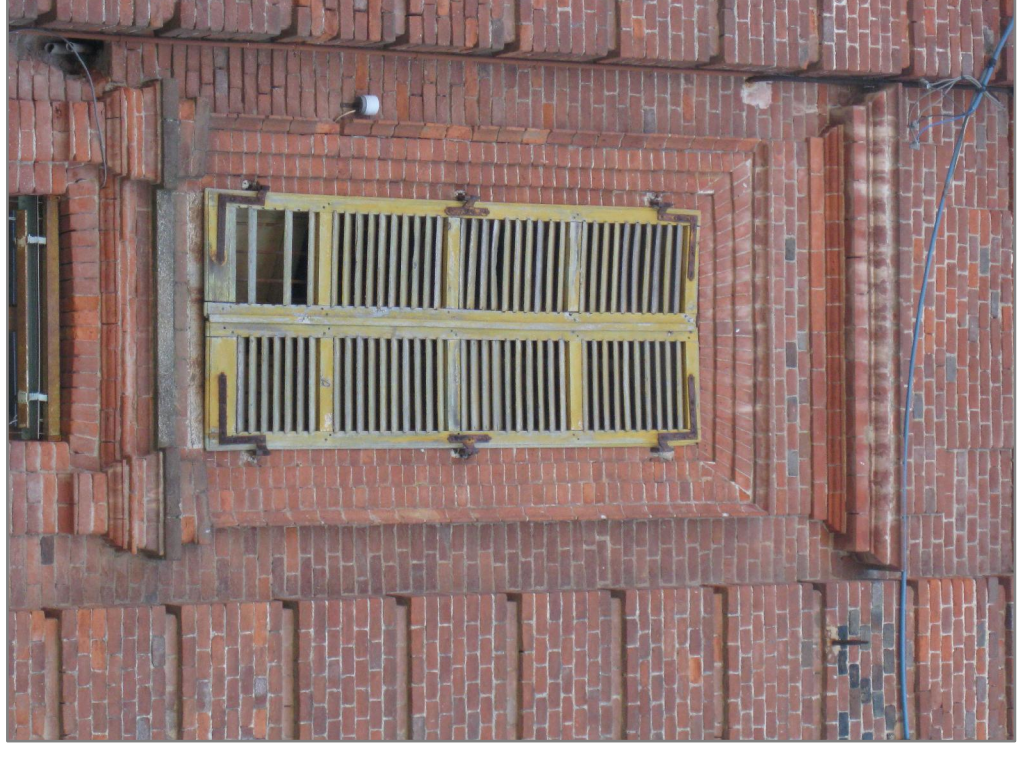
Abaco_09



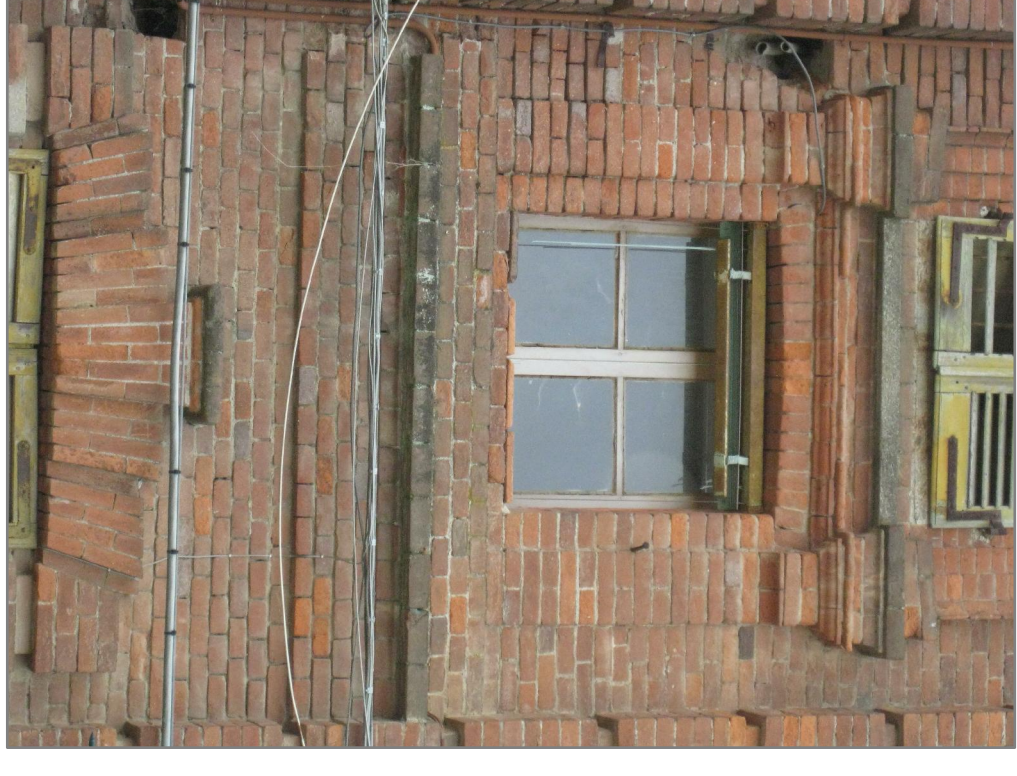
Abaco_10



Abaco_11



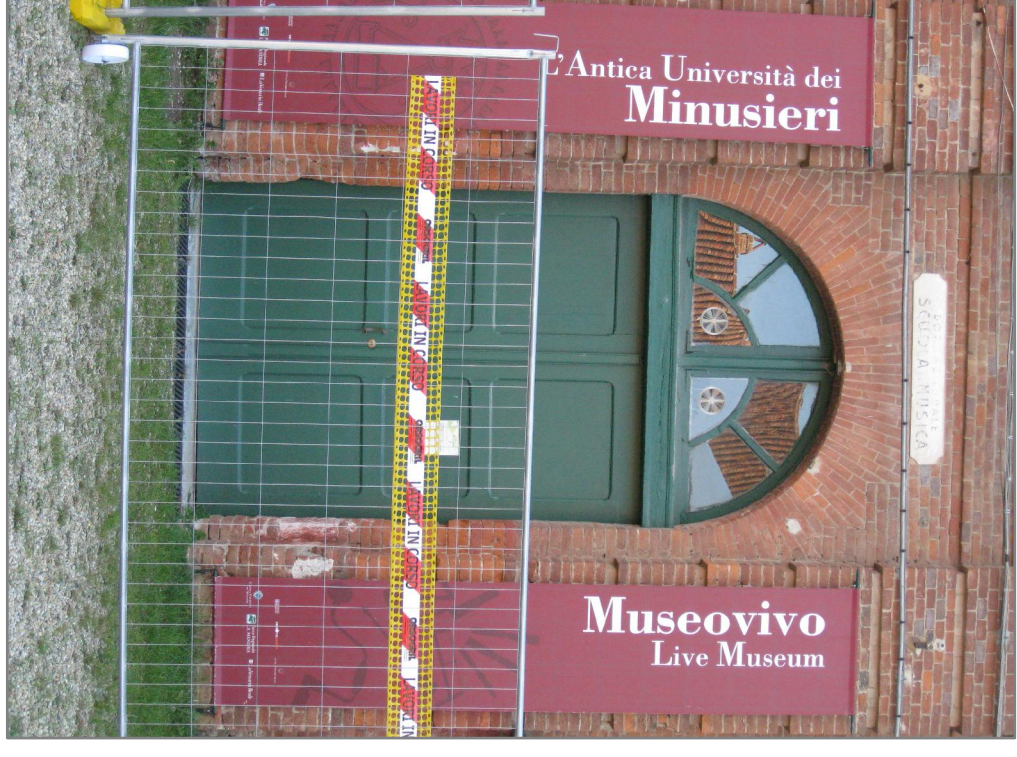
Abaco_12



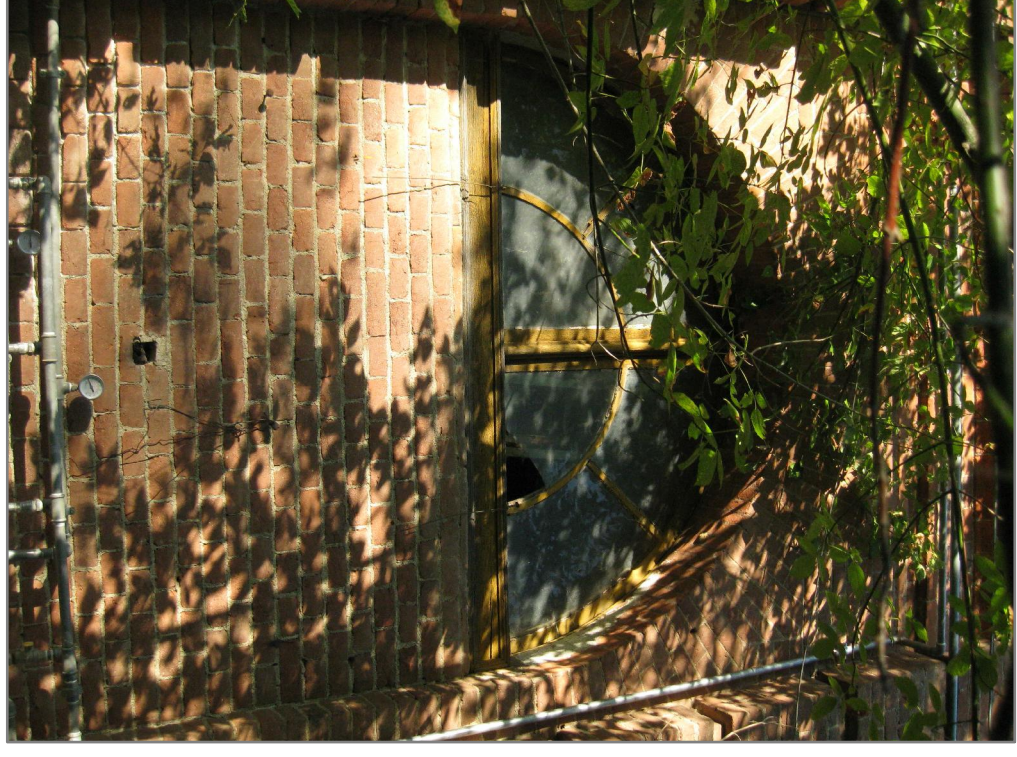
Abaco_13



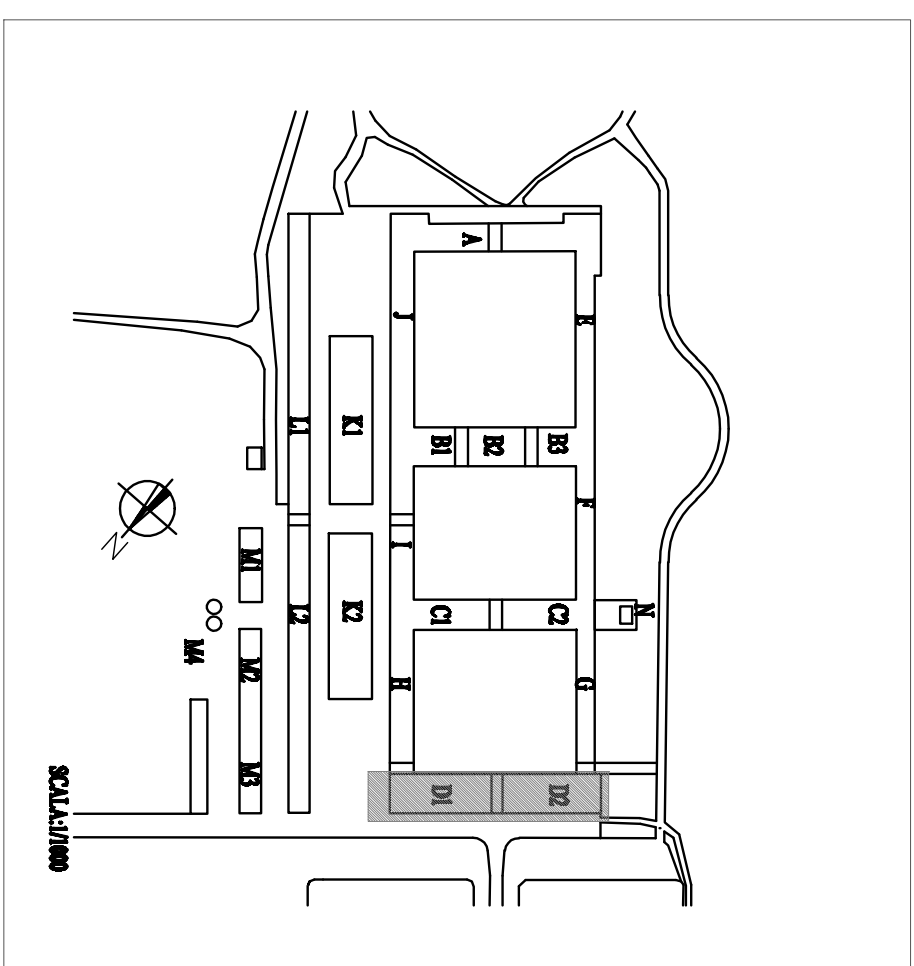
Abaco_14



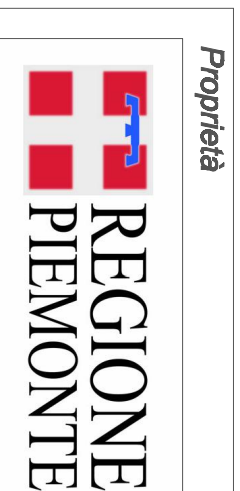
Abaco_15



Abaco_01



COMUNE DI VENARIA REALE



MANUTENZIONE E MESSA IN SICUREZZA FABBRICATO "D" E TORRE OROLOGIO DI BORGO CASTELLO

PARTI II: SERRAMENTI IN LEGNO PERSIANE E PORTONE CARROIO

Progetto Preliminare - Definitivo

Realizzazione progetto a cura del gruppo di lavoro:

- ENTE DI GESTIONE DEL PARCO REGIONALE LA MANDRIA

- Settore Risorsa

Risparmio, arch. Daniela CANTATORE (coordinamento)

- Settore Manutenzione e Patrimonio

arch. Ivano PETTOLANI

- arch. Diego BONZI

RESPONSABILE LAVORO NEL PROCEDIMENTO

DIRETTORE

Studio Stefano GREGALINI

Progetto su base grafica del rilievo geometrico REGIONE PIEMONTE

DISEGNATO	11 - 17	ABACO SERRAMENTI CORPO - D -
SCALA	—	
DATA	01 Ottobre 2010	
REV.		
REVISIONE		
arch. Ivano Pettolani		